



Look book

Poltrona Frau in homes of the world

2024

Americas

178	Palazzo della Luna	Miami, U.S.A.
186	565 Broome Soho	New York, U.S.A.
194	Porto Vita	Miami, U.S.A.

Asia

4	Greenland Taihu Lake City	Suzhou, China
34	Suzhou residential project	Suzhou, China
50	Galaxy Dandi	Shenzhen, China
78	CR Park Land Mansion	Shenzhou, China
90	Greentown Liangjiang Royal Garden	Chongqing, China
106	A three-level villa house	Longtan Taouan, Taiwan
120	Heixi Villa	Chengdu, China
152	Penthouse The Pearl 1	Doha, Qatar
164	Penthouse The Pearl 2	Doha, Qatar
214	Wenzhou residential project	Wenzhou, China
220	Zhejiang, Ningbo residential project	Zhejiang Ningbo, China

Europe

66	Air House	Sophia, Bulgaria
102	Casa Lubi	Remedello, Italy
140	Casale La Madonnina	Cortona, Italy
234	Palazzo delle Poste	Verona, Italy
226	Chongqing residential project	Chongqing, China
240	Zhenghong Zheuzhu	Zhengzhou, China
252	Pangu Plaza	Beijing, China
262	New World Garden	Dongguan Guangdong, China
274	Vanke Bay Park Center	Xi'an, China
288	Metropolis Mansion	Shenzhen, China
310	Shenlanzhongxin	Qingdao, China
326	Yitaitianjiao	Chengdu, China
342	Yanxi Rose Garden	Xi'an, China
352	Qian Hai Imperial Mansion	Shenzhen, China

Suzhou — China

designer: Haihua Zhang
stylist: Yann Song

Greenland Taihu Lake City

Elegant curves and pure texture have injected a new visual experience into this western contemporary space and China garden space residence.

The leather materials and craft details of Poltrona Frau series products are integrated with oriental light and shadow, and the swimming pool, waterscape, cloister and sunken terraced landscape have interpreted a brand-new oriental lifestyle. From indoor to outdoor, it embodies the pure expression after the similarities between western contemporary space and China garden space.







- ↑ Come Together sofa, Pelle Frau® leather Saddle Extra Cammello / Soul Whitney
- ↑ Fiorile 120x120 dual-shelf coffee table, semi-brilliant Arabescato venato marble top / ash in a moka stain base
- Mamy Blue armchair and ottoman, Pelle Frau® leather Saddle Extra Cammello / SC 34 Moggese
- Ming's Heart armchair, Pelle Frau® leather Saddle Extra Cammello









↵ Montera stool, Pelle Frau® leather Saddle Extra Testa di Moro / Pelle Frau® leather SC 233 Bardiglio
↵ 1919 armchair, Pelle Frau® leather Nest Ambra
↑ Lepli 39×39 ottoman, Pelle Frau® leather SC 274 Fresco Blue



↗ Viola chairs, Pelle Frau® leather SC 180 Celadon / leather cording dark brown / ash in a moka stain structure



↪ Vanity Fair XC armchair and ottoman, Pelle Frau® leather SC 175 Bengali Green*
↪ Turner bookcase
↪ Fidelio lamp





↖ John-john bed, Pelle Frau® leather SC 22 Chiffon
↖ Fiorile with drawer side table, Pelle Frau® leather SC 34 Maggese / ash in a moka stain
↖ Xi lamp table, sapphire glass
↑ Ren dressing table, Pelle Frau® leather Saddle Extra Talpa
↑ Lepli 39×39 ottoman, Pelle Frau® leather SC 274 Fresco Blue



➤ Volare bed, Pelle Frau® leather Saddle Extra Cammello / Pelle Frau® leather Nest Pomice
➤ Aida armchair, Pelle Frau® leather SC 34 Maggese / wooden base



↑ ↗ Fred desk ,Pelle Frau® leather Saddle Extra Cammello / ash in a wengè stain
↑ ↗ Ginger Ale swivel chair, Pelle Frau® leather Saddle Extra Polvere / Pelle Frau® leather SC 99 Carrubo







↖ Sparkler lamps, medium and small
↑ Solaria high back armchair with armrests, Loro Piana Interiors fabric Unito col. N Verde Acqua / stainless steel Gesso structure / Ecrù rope
↑ The Secret Garden ø 50 h52 small tables, Teak solid wood structure / Pale Green top



Suzhou residential project

















Galaxy Dandi

When time slows down again, life is taken out of the fast-moving city, and the floating light of the prosperous world gradually fades away to reveal the true appearance of daily life.

This project is located in a duplex private residence in Shenzhen, the owner loves to share, and is very concerned about quality and artistic cultivation, she uses the smallest detail to shape the "container" of life, let nature as a companion, and live by art.





➤ Grantorino sofa, Pelle Frau® leather Saddle Extra Cammello / Nest Madreperla
➤ Fidelio ø 120 h 30 small table, Emperador marble top / ash in a moka stain base
➤ Ming's Heart armchair, Pelle Frau® leather Saddle Extra Cammello / gunmental base
➤ Cestlavie ø46 small table with storage, Pelle Frau® leather Saddle Extra Cammello / SC 66 India / galvanised base
➤ Leather Pot hight vase, Pelle Frau® leather Nest Larimar



↵ Othello 260×110 cm table, brilliant Fior di Pesco marble / ash in a moka stain base

CECCOTTICOLLEZIONI products

↵ Othello 260×110 cm table, brilliant Fior di Pesco marble / ash in a moka stain base

↵ Teresa chair, Pelle Frau® leather SC 75 Cognac* / ash in a moka stain structure

↵ Teresa chair, leather / ash in a moka stain structure



↑ ↖ Esdra ottoman, Pelle Frau® leather SC 258 Mist



↑ Jeff chair with swivel base, Pelle Frau® leather Nest Pomice*
↑ ↗ Ren low bookcase, Pelle Frau® leather Saddle Extra Cammello / Canaletto walnut





↑ ƚ Più Notte night table*, Pelle Frau® leather SC 31 Quarzo Fumè
↑ Jack bed*, Pelle Frau® leather SC 0 Polare
↑ Land 90x280 cm rug*, col. rust



↑ ↗ Times bed, Pelle Frau® leather Nest Argilla / ash in a moka stain structure
↑ Brera bench, Pelle Frau® leather Saddle Extra Cammello / ash in a wengè stain structure
↗ Fidelio Notte night table, Pelle Frau® leather Saddle Extra Cammello / Canaletto walnut top and back
↗ Xi table lamp, emerald glass / Pelle Frau® leather Saddle Extra Cammello

↑ INDEX



Poltrona Frau

Look book

Homes of the world



↑ Xi table lamp, emerald glass / Pelle Frau® leather Saddle Extra Cammello

- CECCOTTICOLLEZIONI products
- ↖ Lampo lamp, walnut dark / shade in cream fabric
 - ↖ Tewnty Two armchair, maple brown / leather

Sofia — Bulgaria

project management: **Sevdalina Nedeva**
Emil Pelitev
Kamen Nedelchev

Air House













CR Park Land Mansion

Luxury living, creating a "landmark impression" in the Bay Area. The owners of the project are a young couple engaged in the Internet high-tech industry, and are also "loyal fans" of the Poltrona Frau brand. For their home, they want to have a warm, interesting design and artistic atmosphere, but also enjoy the high quality of life brought by technological intelligence.





- ↖ Get Back sofa, Pelle Frau® leather Soul Whitney / ruthenium feet
- ↖ Cestlavie ø 88 table with storage, Pelle Frau® leather Saddle Extra Cammello / galvanised feet
- ↖ Cestlavie ø 46 table with storage, Pelle Frau® leather Saddle Extra Talpa / galvanised feet
- ↖ Grant 60x40 cm ottoman, Pelle Frau® leather SC 34 Maggese
- ↖ Journey 47x47 and 35x57 cm cushions, col. Pier 1
- ↖ Journey 35x57 cm cushion, col. Tannery
- ↖ Decorative cushions, fabric Jim Thompson col. Heliconia Dreamin'
- ↖ Leather Pot wide vase, Pelle Frau® leather Nest Salgemma



↖ Jay Lounge armchair and ottoman, Pelle Frau® leather Soul Whitney
↖ Bob ø 45 h 52 small table, brilliant Calacatta marble top / gunmetal finish base
↑ Bolero 250 × 100 table, brilliant marble top / ash in a moka stain
↑ Isadora chair, Pelle Frau® leather Saddle Extra Talpa / ash in a moka stain structure
↑ Rips vase



➤ Bolero 250 × 100 table, brilliant marble top / ash in a moka stain
➤ Isadora chair, Pelle Frau® leather Saddle Extra Talpa / ash in a moka stain structure
➤ Jay Lounge armchair and ottoman, Pelle Frau® leather Soul Whitney
➤ Zhuang oval tray, Pelle Frau® leather Saddle Extra Cammello



- ↑ Bolero 250 × 100 table, brilliant marble top / ash in a moka stain
- ↑ Isadora chair, Pelle Frau® leather Saddle Extra Talpa / ash in a moka stain structure
- ↑ Zhuang oval tray, Pelle Frau® leather Saddle Extra Cammello
- ↗ Le Spighe stool, Pelle Frau® leather SC 180 Celadon / american walnut
- ↗ Leather Pot high vase, Pelle Frau® leather Nest Larimar





↑ Coupè De Luxe bed, Pelle Frau® leather Nest Salgemma / gunmetal steel feet
↑ Scarlett round sofa, Pelle Frau® leather Saddle Extra Talpa / Nest Salgemma
↑ Journey 47 × 47 cm cushion, col. Gion
↗ Moondance night table, Pelle Frau® leather Nest Salgemma / semibrilliant Calacatta marble top / Canaletto walnut back
↗ Ren dressing table, Pelle Frau® leather Saddle Extra Talpa / Canaletto walnut structure
↗ Lepli 39 × 39 cm ottoman, Pelle Frau® leather SC 180 Celadon / SC 66 India



Chongqing — China

designers: **Ma Aiyang, Wang Yazhu**

Greentown Liangjiang Royal Garden

Living in a bustling city for a long time can inevitably make one feel a bit crowded and tired. Pushing open the door of their home, the distant mountains with overlapping peaks appear hazy and far away, like a fantasy representation of a traditional Chinese landscape painting. In Chongqing's three-dimensional mountainous city, this natural scenery is rare to find and unique to only a few houses.

Ten years later, a couple with different personalities and hobbies but very harmonious, brought their different needs, preferences, and aspirations for their new home to the designer. The designer combined the owners' requirements and constructed an ideal home that connects ancient and modern elements, integrates Eastern and Western spatial art, and harmonizes humans with nature.

[↑ INDEX](#)

PHOTO: ©Zhang Qilin





↑ ↗ Archibald King armchairs, Pelle Frau® leather SC 34 Maggese
↑ Bretagne sofa, Pelle Frau® leather Nest Salgamma
↑ Clayton chase longue, Pelle Frau® leather SC 20 Inchiostro / fabric Shine col. Black Iris





➤ Get Back sofa, fabric Shine col. Beige / Pelle Frau® leather SC 33 Travertino
➤ Bob ø 45 h 43 cm caffè table, Pelle Frau® leather SC 56 Siena
➤ Archibald Gran Comfort armchair, Pelle Frau® leather Safari Elefante



↖ Get Back sofa, Pelle Frau® leather SC 33 Travertino / fabric Shine col. Beige
↖ Archibald Gran Comfort, Pelle Frau® leather Safari Elefante
↖ Bob coffee table Ø 45 h 52, Pelle Frau® leather SC 56 Siena



↑ John-John sofa, Pelle Frau® leather Nest Salgemma
↗ Viola small armchair, Pelle Frau® leather SC 40 Cachemire with natural leather rope dark / brown and wenge ash structure





↵ Times Lounge armchair, Pelle Frau® leather SC 33 Travertino / fabric Gaban col. 5403
↵ Bob coffee table Ø 45 h 52, Pelle Frau® leather SC 66 India

Remedello (BS) — Italy

project: **ZDA | Zupelli Design Architettura - Carlo e Ezio Zupelli**

Casa Lubi

Luminous, ethereal, harmonious and vaguely “zen” atmospheres characterize Casa Lubi, made entirely to measure with the aim of updating in a contemporary key the farmhouse that was the subject of the intervention.

Which, specifically, involved the 360-degree renovation of all rooms, according to an architectural and aesthetic concept in balance between past, present and future.





A three-level villa house

A three-level villa house with spacious backyard is a dream house for lots of people. Furniture has always been the key element in a space. The owner was deeply in love with Poltrona Frau and with the hundred years of Italian craftsmanship. The owner kept a space with the best natural lighting for it. The graceful and charming position of the chair easily makes people think it's an art.

Design should be a decision made after understanding the needs of the customer. After reorganizing the ideas with the renovated equipment, the house is ready for its next mission. The family memories are continued.















credits: **Chengdu Weimei Furniture Trading Co. Ltd**
designer: **Chengying Lu**

Heixi Villa

Luxehills International Community

The initial encounter with this building remains vivid in memory, as it evoked a sense of tranquility and serenity. It quietly disappeared behind a few ancient and sturdy pine trees, maintaining an appropriate distance from the bustling crowds.

Upon entering, the unassuming and warm temperament became even more apparent. Within the fluid spaces, the changing seasons served as the backdrop, while the architecture itself acted as an instrument. All the interior decorations followed the principles of classic elegance, comfort, and naturalness. They linked together the poetry of daily life and conveyed a profound emotional connection to beauty.



➤ Fidelio cabinet, Pelle Frau® leather Saddle Avorio / ash in a moka stain top
➤ Ilary Ø 53 h 45/47 table, Pelle Frau® leather Saddle Extra Cammello / Ruthenium steel base



↖ Get Back sofa, Pelle Frau® leather SC 66 India / fabric Shine col. Silver
↖ Kyoto 102×50 table, 102×50, extra-light solid beech wood
↖ Esedra ottoman, Pelle Frau® leather Heritage Bordeaux
↖ Fidelio lamp



➤ Come Together sofa, Pelle Frau® leather SC 23 Tortora / Saddle Extra Cammello
➤ Archibald King armchair, Pelle Frau® leather Century Khaki*
➤ Ilary ø 110 h 35 cm, brilliant Calacatta Gold marble / ash in a moka stain base



↶ 1919 armchair, Pelle Frau® leather Century Foresta*
↑ Archibald King armchair, Pelle Frau® leather Century Khaki*
↑ Bob ø45 h 43 cm, semi-brilliant Calacatta Gold marble / Pelle Frau® leather Nest Silice column / gunmental base
↑ Holly lamp



➤ Othello 260×110 cm table, brilliant Calacatta Gold marble top / ash in a wengè stain base
➤ Fitzgerald chair, Pelle Frau® leather SC 21 Amianto
➤ Fitzgerald high chair, Pelle Frau® leather SC 206 Ottanio*



↑ ↖ Intervista armchair, Pelle Frau® leather SC 51 Panna
↖ Fidelio drinks cabinet, Pelle Frau® leather Saddle 07 Oliva / semi-brilliant Fior di Pesco marble top / ash in a moka stain back

CECCOTTICOLLEZIONI products
↑ ↖ Full Table round Ø180, walnut moka structure / Mediterraneo marble top
↑ ↖ Neverfull low cabinet, American walnut / brown walnut base / Cervairole marble top



↑ 𐀀 Fred desk, Pelle Frau® leather Saddle Extra Cammello / ash in a wenge stain
↑ 𐀀 Ginger armchair, Pelle Frau® leather Saddle Extra Cammello / SC 80 Bruno Havana / ash in a wengè stain
↑ 𐀀 Ren Bookcase, Pelle Frau® leather Saddle Extra Cammello / Canaletto walnut structure
↑ 𐀀 Zhuang Desk, Pelle Frau® leather Saddle Tortora



- ↵ Mamy Blue bed, Pelle Frau® leather Saddle Extra Cammello / Nest Luna / ash in a wengè stain
- ↵ Mamy Blue armchair and ottoman, Pelle Frau® leather Saddle Extra Cammello / Nest Calcedonio / ash in a wengè stain feet
- ↵ Fidelio night table, Pelle Frau® leather Saddle Extra Corda / semi-brilliant Calacatta Gold marble top / Canaletto walnut back
- ↵ Fidelio chest of drawer, Pelle Frau® leather Saddle Extra Corda / semi-brilliant Calacatta Gold marble top / Canaletto walnut back
- ↵ Brera bench, Pelle Frau® leather Saddle Extra Corda / ash in a moka stain structure



↑ Coupè bed, Pelle Frau® leather SC 23 Tortora / fabric Nouveau col. 10 Grafite (lighter side)* / gunmetal steel feet
↑ Moondance night table, Pelle Frau® leather SC 28 Seppia / semi-brilliant Calacatta Gold marble top / Canaletto walnut back
↑ Xi lamp table, Sapphire glass
↗ Turner bookcase, Pelle Frau® leather Saddle Executive Ink / Canaletto walnut structure
↗ Dezza 48 armchair, Pelle Frau® leather SC 20 Inchiostro / Cavallino / black lasquered ash legs
↗ Lepli 39x39 ottoman, fabric Nouveau col. 13 Blu scuro* / Pelle Frau® leather SC 239 Prussia*





↵ John-John bed, Pelle Frau® leather SC 263 Lilla*
↵ Fiorile with drawer, Pelle Frau® leather Saddle Avorio / ash in a moka stain base
↑ Martha rocking armchair, Pelle Frau® leather Talpa / fabric Millerighe col. Rosa Antico* / ash in a moka stain base

Cortona — Italy

architect: Gianluca Caputi - CAPUTISTUDIO

Casale La Madonnina

PHOTO: © Alessio Neroni













Penthouse The Pearl 1

Situated on the top two floors of a majestic tower with a 360-degree panoramic sea view, this approximately 900 sqm luxury penthouse offers a breathtaking perspective. The residence is spread over two levels, with a white metal spiral staircase featuring wooden steps serving as a connecting element between the two levels, creating a contemporary and refined design. The interiors are characterized by fluidity and organic forms, highlighting an elegant cylindrical bar with a sea view, located near the dining area. A notable detail is the creation of large sliding windows that connect the living area to the outdoor terrace, which has been enhanced with a green wall and large pots containing olive and lemon trees. The skillful use of wooden boiserie personalizes both the common areas and the bedrooms, in perfect continuity with the library at the entrance, designed to showcase unique decorative pieces.







- ↖ Get Back sofa, Pelle Frau® leather SC 67 Chiodi di Garofano
- ↖ Dezza armchair, Pelle Frau® leather SC 180 Celadon / black lacquered ash feet
- ↖ Fidelio Ø90 h30 small table, top in semi-brilliant veined Arabescato marble with base in ash in a wenge stain
- ↖ Fidelio Ø120 h30 small table, top in semi-brilliant veined Arabescato marble with base in ash in a wenge stain
- ↖ Fidelio Ø45 h49 small table, top in Pelle Frau® leather Saddle Extra Testa di Moro with base in ash in a wenge stain



↑ ↗ Viola chair, Pelle Frau® leather SC 22 Chiffon / ash in a moka stain structure
↑ Archibald stool, Pelle Frau® leather SC 187 Selva / ash in a wenge stain



↖ H_0 Desk president desk, Pelle Frau® leather Saddle Tortora / ash in a teak stain top / white porphyry colour
↖ Cercle President office chair, Pelle Frau® leather Saddle Executive Ink / fabric Bouclè col. 104 / Aluminum in black finish base
↖ Ming's Heart armchair, Pelle Frau® leather Saddle Extra Cammello / galvanised gunmetal grey finish structure
↖ Massimosistema sofa, Pelle Frau® leather SC 28 Seppia
↖ Decorative Cushions, Pelle Frau® leather SC 22 Chiffon
↑ Archibald stool, Pelle Frau® leather SC 187 Selva / ash in a wenge stain



Penthouse The Pearl 2

An approximately 950 sqm penthouse, embraced by the sea on all sides, captures the brilliant light of the Persian Gulf, offering a spectacular view of the city and the sea. Split into two levels, with the living area on the ground floor and the bedroom area on the first floor, natural light becomes a pivotal element in every space.

Connecting the two levels is a sculptural white staircase, creating a double-height living space that exudes brightness and airiness. Elegant walnut boiserie with illuminated niches graces both levels. The finishes are distinguished by the use of neutral and warm colors, imparting a welcoming and sophisticated touch to the interiors of this coastal abode.



➤ Come Together sofa, Pelle Frau® leather SC 176 Darsena / feet in Ruthenium
➤ Pierre small table, Calacatta marble top / burnished Aluminium structure





↑ Get Back sofa, Pelle Frau® leather SC 31 Quarzo Fumè / fabric Gabàn col. 01 / Ruthenium feet
↑ Martha armchair, Pelle Frau® leather Saddle Extra Polvere / Pelle Frau® leather Nest Luna / ash in a moka stain legs
↑ Bob ø 45 h52 small tables, Calacatta marble top
↗ Bretagne sofa, Pelle Frau® leather SC 80 Bruno Havana / aluminum in a gunmetal grey base
↗ Willy armchair, Pelle Frau® leather Nest Pomice
↗ Pierre small table, Calacatta marble top / burnished Aluminium structure





- ↖ Get Back sofa, Pelle Frau® leather SC 31 Quarzo Fumè / fabric Gabàn col. 01 / Ruthenium feet
- ↖ Martha armchair, Pelle Frau® leather Saddle Extra Polvere / Pelle Frau® leather Nest Luna / ash in a moka stain legs
- ↖ Bob ø 45 h52 small tables, Calacatta marble top
- ↖ Bob ø 45 h43 small table, Calacatta marble top



↑ Bob ø 45 h43 small table, Calacatta marble top
↑ Bob ø 80 h32 small table, Calacatta marble top
↗ Jay Lounge armchair and ottoman, Pelle Frau® leather SC 21 Amianto / steel burnished finish base





↶ ↑ Viola chair, fabric Bouclè col. 102 / ash in a moka stain structure
↶ Archibald stool, Pelle Frau® leather 274 Fresco Blue / ash in a moka stain base



↑ Mamy Blue armchair, Pelle Frau® leather Nest Azul / Pelle Frau® leather Saddle Extra Cammello / ash in a moka stain base
↗ Suzie Wong bed, Pelle Frau® leather SC 53 Creta
↗ Fidelio Notte night table, Pelle Frau® leather Saddle Avorio / Canaletto walnut top



Miami — U.S.A.

architect: **Kobi Karp — ASR Construction**

Palazzo della Luna

Fisher Island, an exclusive oasis, accessible only by sea with the island's auto-ferry or by private yacht. A tropical paradise where life flows at a relaxing pace, but so close to the vibrant rhythm of downtown Miami and Miami Beach that you can feel their energy. 50 residences developing on 10 floors, designed by architect Kobi Karp and built by ASR Construction. Poltrona Frau was called to furnish the fourth-floor condo, almost four thousand square meters of contemporary elegance. After their elite interiors of yachts, cars and designer furniture, the natural consequence could only be one of the most exclusive residential projects of the world.





Wood flooring, custom millwork, floor-to-ceiling sliding doors provide an abundance of natural light from a 1,729-square-foot wraparound terrace, facing over the Atlantic Ocean, South Beach, Downtown Miami. The residence opens on a library lounge, with a matte-black-oak Lloyd bookcase designed by Jean-Marie Massaud for Poltrona Frau, covered with camel saddle leather and bright, orange shelving.

Cream is the colour theme of the living room, where the Let it Be sofa and a matching ottoman, are a hymn to comfort and relax, while the Isidoro bar cabinet lined with saddle leather represents the spirit of the party. In the master bedrooms, Poltrona Frau besides upholstering the bedside tables, is also represented by its Ginger desk chair, Lepil twill fabric pouf, Nivola love seat and Brera bench at the foot of the Suzie Wong bed.





The light blue of the ocean floods into the same colour guestrooms. One features a king-size bed with Poltrona Frau's Fidelio nightstand and console in camel saddle leather, while the other is furnished with the Aurora Due queen bed, and upholstered headboard. Privacy and comfort, lavish entertainment and exclusive parties. A double soul that Poltrona Frau can fully satisfy in every environment.





New York — U.S.A.

architect: **RPBW - RDAI - Bizzi & Partners Development**

565 Broome SoHo

565 Broome SoHo is the result of a collaboration between Renzo Piano Building Workshop, the Paris interior design firm RDAI, and Italian developers, Bizzi & Partners Development. A true architectural dream team, for an exclusive 30-story residential project, made of two glass towers dominating the Hudson River, in SoHo the artistic neighbourhood of New York. Expertise, passion for innovation combined with a profound knowledge of New York's and in particular of the neighbourhood's history. These are the materials on which the project was built, and where Poltrona Frau was called to give its important contribution to the furnishing of an astonishing 17-million-dollar residence.





The Poltrona Frau model unit, N28A is located in the North Tower. With its floor to ceiling glass windows, with rounded glass corners that let you “fly” over breathless views of the city, from the Empire State Building, to the Hudson River, the interiors cannot be less. The apartment can be accessed via private elevator opening on the living and dining room area, where the Albero bookcase by Gianfranco Frattini and Xi suspension lamp – designed by Neri & Hu - immediately define the location’s personality, while the Bolero Ravel table surrounded by 10 Isadora chairs, are awaiting the next guests that this remarkable setting deserves.

31 artworks from 10 different contemporary artists, complete the styling of this cream coloured side of the house, flooded with light in the day and with an indescribable atmosphere in the evening and at night. The master bedroom suite includes the Times bed, named after the famous font type, with a custom-made headboard, together with a Club armchair by Renzo Frau. The room faces on a full-length window view over the city that never sleeps with an audacious contrasting relaxing and warm atmosphere.







Poltrona Frau's signature continues with an imposing composition of the Let it Be sofa, Archibald and Jay Lounge armchairs, Montera stools, Ren bookcases in the kitchen and in a reading room, the GranTorino Coupè and Suzie Wong beds in the further two bedrooms. Fidelio low cabinet and Lloyd storage units complete the series of endless pieces of furniture in this amazing Poltrona Frau apartment, 4,682 square feet of timeless elegance and style.



Miami — U.S.A.

architect: Jessica Jaegger Interior Design

Porto Vita





















Wenzhou — China

architect: **Womehome**

Wenzhou residential project

This astonishing residential project in Wenzhou, China, draws its inspiration from the blue seascape of Biscay Bay. Straight lines with a Bauhaus minimalist style characterize the spaces where all partition walls have been eliminated creating an integrated living environment. With its style and its cross-cultural elegance, Poltrona Frau interprets this freedom of space and communication. The refreshing blue colour soothed by the relaxing tones of grey, works as a trait d'union from Jean-Marie Massaud's Archibald armchair and Bob coffee table to the GranTorino armchair, Let it Be sofa and Ilary coffee tables, combining elegance, design and comfort.





The liquid and interconnecting spaces flow into the dining room, where Poltrona Frau selected their Fitzgerald chairs for their timeless and international allure. Undeniably a living experience, where Poltrona Frau has helped the design team interpret at its maximum the potential of this project, where the abstract art of nature merges with modern design, and shapes the unbounded beauty of nature and life.





Zhejiang, Ningbo — China

designer: **Sevtract Design Studio - K. Jiang, H. Zhang**
co-creative designer **KeWen Jiang, HuJie Zhang**

Zhejiang, Ningbo residential project

A three-floor residential project where Sevtract Design Studio called Poltrona Frau for the interior decoration for its timeless but contemporary style. Neutral tones, where different shades of cold and warm grey create a sombre and minimalistic atmosphere. In the living area marble and leather are the imposing protagonists, here we find a sitting zone with the Let it Be modular system sofa and an Archibald armchair, two classic pieces from Poltrona Frau's catalogue, by Ludovica & Roberto Palomba and by Jean-Marie Massaud. Let it Be, as the name suggests is a hymn to relax and comfort, rejecting all forms of conventions and formalisms.





This versatile sofa creates a homely nest, a multi-purpose space to enjoy at your own pace. Fiorile coffee table with marble top and Fidelio small table complete the lay-out. Six Isadora chairs define the dining and kitchen area.

This chair was inspired by the grace of Isadora Duncan, pioneer of contemporary dance and designed by Roberto Lazzeroni, wrapped in Pelle Frau® Saddle Extra leather, with a protective dye and wax, which makes it particularly suitable for dining areas.



On the second floor we find the sleeping area. Here, Roberto Lazzeroni is also the designer for the Ginger armchair. Its refined simplicity offers a comfortable shell shape, right next to the bedside. Elegance, comfort, visionary use of classic materials, like leather and marble confer to this house a suspended atmosphere, where Poltrona Frau meets all the expectations.



Chongqing — China

designer: **Jiao Yanfeng**
interior designer **X. Y. Design, Q. Yongyi, W. Yazhu, W. Ze**

Chongqing residential project

“Our lives are inseparable from space,
light and order, just like we cannot
do without bread and sleep.”

These words by Le Corbusier are the inspiring concept for this residential project in Chongqing. Here is the world away from chaos of the city. Space becomes liquid, divided into just four rooms over a surface of 700 square meters. High-rise ceilings give space to Poltrona Frau's contribution to this elegant and sombre atmosphere. Stable and restrained, the character of the homeowner and his wife, is perfectly presented in the use of neutral tones throughout the house. The living and dining areas are dominated by grey and sand nuances, where daylight comes from the huge floor-to-ceiling windows.





Two adjoining but separated sitting areas create multiple convivial or relaxing occasions, on the left GranTorino sofa and two Archibald armchairs with a round Ilary coffee table in the centre, all designed by Jean-Marie Massaud. A Blue Pallo glass vase by Carina Seth Andersson reflects the light and the moment. In the second sitting room, with a modern white mantelpiece, a Mamy Blue armchair by Roberto Lazzeroni and matching pouf create the perfect reading corner.

From the study to the bedroom, every piece of Poltrona Frau fits perfectly with the house. In the TV area, where grey tones characterise the space, we find the famous Dezza armchair by Gio Ponti in a bright light blue, with a Fiorile coffee table. In the studio room, we find a Lloyd bookcase with a Downtown president office chair, completed by a Leather Pot vase.



The main dining room discovers light and nature through the glass façade over a Bolero table surrounded by Montera chairs (both by Roberto Lazzeroni), while in a second dining room we find a round version of Bolero table with Lazy Susan rotating top. Montera chairs, in white and black and a Fidelio High cabinet complete the scene. Fidelio Notte, Mamy Blue bed and a Nivola armchair, all designed by Roberto Lazzeroni, are the protagonists of the last space, the sleeping area, in the same colour theme that characterizes the entire home: grey, white and sand.



The refreshing blue colour soothed by the relaxing tones of grey, works as a trait d'union from Jean-Marie Massaud's Archibald armchair and Bob coffee table to the GranTorino sofa chair, Let it Be sofa and Ilary coffee tables, combining elegance, design and comfort.

The liquid and interconnecting spaces flow into the dining room, where Poltrona Frau selected their Fitzgerald chairs for their timeless and international allure.



Undeniably a living experience, where Poltrona Frau has helped the design team interpret at its maximum the potential of this project, where the abstract art of nature merges with modern design, and shapes the unbounded beauty of nature and life.



credits:
architect:

Gruppo Squassabia
Paolo Richelli

Palazzo delle poste

In the heart of the city, just steps away from Piazza Erbe, Juliet's house, and the Scaligeri palaces, Verona narrates the events of a not-so-distant past through the redevelopment of a nineteenth-century city palace, always known as the "Palazzo delle Poste" (Post Office Palace). Designed in an eclectic neoclassical-baroque style in the mid-1920s, near an adjacent botanical garden, by the renowned Veronese architect Ettore Fagioli, the palace served as the main headquarters of civic postal services until 2019.

The spacious residence not only presents itself wrapped in a cohesive and modern look that coordinates all the different spaces but also distinguishes itself primarily for its uniqueness and wealth of details. Here, you'll find the refinement of customized furnishings, marble and brass accents and iconic pieces from Poltrona Frau. All of this contributes to the flourishing of an innovative living concept: precious, artistic, and personalized.







Zhengzhou — China

project: **Henan Xipan Home Design**

Zhenghong Zhenzhu

The fusion of the clean and pure essence of life with the outdoor natural scenery envelops the entire space in a thin and warm atmosphere.

The Poltronafrau series of products integrate appearance and color into space, endowing space value with creative spirit and professional expression.



➤ Vanity Fair Baby armchair, Pelle Frau® leather SC 74 Nocciola



➤ Let it Be sofa, Pelle Frau® leather SC 51 Panna / Pelle Frau® Saddle Extra Corda
➤ Dezza 24 armchair, Pelle Frau® leather Nest Larimar
➤ Blue Pallo vase, large and medium
➤ Lepli 39x39 ottoman, fabric Milano col. 03 / Pelle Frau® leather SC 28 Seppia



↶ Let it Be sofa, Pelle Frau® leather SC 51 Panna / Pelle Frau® Saddle Extra Corda
↑ Dezza 24 armchair, Pelle Frau® leather Nest Larimar



↑ ↗ Bolero table 220×110 , semi-brilliant Calacatta gold marble
↑ ↗ Montera chairs, Pelle Frau® leather Saddle Extra Testa di Moro / Pelle Frau® leather SC 51 Panna
↑ ↗ Rips large and small pot
↑ ↗ Pura bowl





↵ Coupè bed , Pelle Frau® leather SC 23 Tortora / fabric Melange col. 6 Argento
↵ Fidelio Notte night table, Pelle Frau® leather Saddle Extra Polvere / Canaletto walnut
↵ Nivola sofa, Pelle Frau® leather Saddle Extra Polvere / fabric Nouveau col. 10 Grafite - lighter side
↵ Ren dressing table, Pelle Frau® leather Saddle Extra Corda
↵ Ming's Heart armchair, Pelle Frau® leather Saddle Extra Corda



↑ Fidelio Notte chest of drawer, Pelle Frau® leather Saddle Extra Polvere / Canaletto walnut
↗ Isadora chair, Saddle Extra Polvere



Pangu Plaza

The elegant curves and pure texture have created the overall charm of the space.

The leather material and craftsmanship details of the Poltrona Frau products inject exquisite soul into this ambience. Located adjacent to Beijing's Olympic Forest Park, you could overlook the beautiful National Stadium, which brings you a sense of joy and relaxation, both from the view outside the window and the comforting premium Poltrona Frau iconic products in the apartment.



➤ 1919 armchair, Pelle Frau® leather SC 05 Stucco



- ↖ Chester Line sofa, Pelle Frau® leather SC 34 Maggese
- ↖ Vanity Fair armchair, Pelle Frau® leather Century Tabacco
- ↖ Scarlett round sofa, Pelle Frau® leather Nest Pomice / Saddle Extra Cammello
- ↖ Cestlavie with storage ø88, Pelle Frau® leather Saddle Extra Polvere
- ↖ Ren side table, Pelle Frau® leather Saddle Extra Cammello / canaletto walnut
- ↖ Ilary coffe table, brilliant marble
- ↖ Fidelio small table, semi-brilliant marble / ash in a moka stain



↑ ↗ Archibald Gran Comfort armchair with ottoman, Pelle Frau® leather Safari Elefante
↑ ↗ Bob Ø45 h52 small table, Pelle Frau® leather SC 69 Iroko
↑ ↗ Sparkler lantern, Medium
↑ ↗ Leather Pot small with cover, Pelle Frau® leather SC 140 Mimosa





↑ Vanity Fair armchair, Pelle Frau® leather Century Tabacco®
↑ Journey cushion 47×47, Tannery
↑ Blue Pallo vases, Small and Medium
↖ 1919 armchair, Pelle Frau® leather SC 05 Stucco



Dongguan, Guangdong — China

project: Dongguan Jazz Design, Lin Zifeng

New World Garden

Prosperity is the background color of the city. The designer follows the preferences of the clients and integrate art and space within close proximity while meeting the functional needs of daily living. They employ top-tier brands like Poltrona Frau to highlight quality and style. It embodies a lifestyle that blends with nature, blends with space, and blends with quality.





- ↖ GranTorino sofa, Saddle Avocado / Pelle Frau® leather SC 23 Tortora
- ↖ Dezza 48 armchair, Pelle Frau® leather SC 20 Inchiostro / Cavallino "brown spots"
- ↖ Ren side table, Saddle Extra Polvere / Canaletto walnut
- ↖ Bob Ø45 h52 small table, Calacatta marble



↑ Let it Be sofas, Pelle Frau® leather Saddle Avocado / SC 173 Glauco
↑ Ilary coffe table Ø 80 h 45, Pelle Frau® leather Saddle Extra Cammello / brushed burnished steel
↑ Ilary coffe table Ø 110 h 35, Calacatta marble, ash in a moka stain
↗ 1919 armchair, Pelle Frau® leather Heritage Bordeaux
↗ Ren side table, Pelle Frau® leather Saddle Extra Polvere





➤ Isadora chairs, Pelle Frau® leather Saddle Extra Polvere / ash in a wenge stain
➤ Mi low cabinet, Pelle Frau® leather Saddle Extra Polvere / brilliant Calacatta gold marble top
➤ Xi table lamp, sapphire glass



↑ ↗ Volare Due bed, Pelle Frau® leather Saddle Extra Polvere / fabric Vega col. 303 / ash in moka stain



↑ Mr Moonlight bed, Pelle Frau® leather Saddle Extra Cammello / SC 66 India
↑ ↗ Moondance night table, Pelle Frau® leather SC 176 Darsena / Canaletto walnut
↑ Dezza 48 armchair, Pelle Frau® leather SC 20 Inchiostro / Cavallino "brown spots"
↑ Ren side table, Pelle Frau® leather Saddle Extra Polvere / Canaletto walnut
↗ Coupè bed, Pelle Frau® leather SC 176 Darsena / fabric Milano col. 03
↑ Nivola sofa, Pelle Frau® leather SC 176 Darsena / fabric Milano col. 03
↗ Bob coffee table Ø 45 h 52, Pelle Frau® leather SC 176 Darsena



Vanke Bay Park Center

In today's fast-developing era, design and art are given more new meaning and value, and at the same time inspire the aesthetic perspective and life needs of today's young generation.

The owner of the project is a highly talented student graduated from an Ivy League school, currently engaged in the financial and securities industry. When he returns home after a busy work day, he expects to have a home space where he can fully relax, and while achieving wealth accumulation, he has also forged his unique artistic temperament.





➤ Let it Be sofa, Pelle Frau® leather Saddle Extra Polvere / ash in a wenge stain
➤ Mi low cabinet, Pelle Frau® leather Saddle Extra Polvere / brilliant Calacatta gold top
➤ Xi table lamp, sapphire glass



↑ ↗ Du 30 chair , Pelle Frau® leather SC 26 Topo
↗ Mesa Due Ø 135 h 75 cm round table, ash in a wengè stain top / Pelle Frau® leather Saddle Extra Polvere base





↖ Fidelio Console, brilliant Calacatta marble top / 32 Ash in a wengé stain base
↖ Leather Pot vase, Pelle Frau® leather SC 255 Belladonna
↑ Viola small armchair, Pelle Frau® leather SC 180 Celadon / ash in a moka stain feet



- ↵ Mr Moonlight bed, Pelle Frau® leather SC 98 Ribes* / aluminium in a ruthenium finishing feet
- ↵ Moondance night table, Pelle Frau® leather SC 98 Ribes* / semi-brilliant Calacatta marble top / Canaletto walnut back
- ↵ Lepli 39×39 ottoman, Pelle Frau® leather SC 98 Ribes*
- ↵ Chado 200×300 cm rug, Pearl Grey



↑ Clayton armchair with bench, Pelle Frau® leather Soul Diana / fabric Giano col. 9 lighter side / Ruthenium feet
↑ Chamonix plaid, Sparrow
↑ Bob Ø 45 h 52 cm coffee table, Pelle Frau® leather SC 26 Topo top / Gunmetal Grey feet
↑ Mini Archibald, Pelle Frau® leather SC 96 Mattone
↗ Ren valet stand, Pelle Frau® leather Saddle Extra Cammello / Canaletto walnut structure





↖ Fumoir armchair, fabric Barkley col. 027 Lichene
↑ Lepilì 121×145 h 42 cm ottoman, Pelle Frau® leather SC 56 Siena
↑ Chamonix plaid, Cardinal

Metropolis Mansion

Home is a collection of accommodation, but also the continuation of warmth, when in it, everyone has their own comfort zone, carrying the space of love, is the meaning of home. The owner of the project is a corporate manager who has been developing in Shenzhen for many years. After a busy work schedule, he aspires for a bright, warm and high-quality living life, and hopes that this house can hold the happy time of the whole family.

The designer presented a rich spatial experience for the owner in the plan, integrating the concept of "art can make life more lifelike" in this large family centered on life.



➤ Martha rocking armchair, Pelle Frau® leather Saddle Extra Polvere / Nest Eliodoro / ash in a moka stain feet
➤ Mini Archibald Anniversary Limited Edition





↑ ↗ Fiorile 120×120 cm dual-shelf table, veined Arabescato marble / Pelle Frau® leather SC 26 Topo / ash in a moka stain
↑ ↗ Lloyd 280×42 h 188 cm freestanding bookcase, Pelle Frau® leather Saddle Extra Cammello
↑ ↗ Chado 200x300 cm rug, Pearl Grey
↑ ↗ Mini Vanity Fair, Pelle Frau® leather SC 217 Pacifico*
↑ ↗ Mini Intervista, Pelle Frau® leather SC 143 Carioca*
↗ Archibald armchair, Pelle Frau® leather Nest Cemento
↑ Mini Archibald Anniversary Limited Edition

CECCOTTICOLLEZIONI products

↑ D.R.D.P sofa, walnut structure / Pelle Frau® leather Nest Ambra / tray in silver sandblasted glass
↑ Petit Matin, 55x49 h 55 cm small table, walnut dark structure / Carvaiole marble top / NCS S3005Y50R lower top
↑ Lampo lamp, walnut dark / shade in cream fabric
↑ Don Giovanni 50x50 cm small cushion, fabric Marvin (Osborne & Little) col. F7320-03
↗ Don Giovanni 50x50 cm small cushion, Pelle Frau® leather Nest Ambra







↳ Iren freestanding desk, Pelle Frau® leather Saddle Extra Talpa / ash in a moka stain
 ↳ Ginger chair, Pelle Frau® leather Saddle Extra Talpa / SC 51 Panna / ash in a moka stain
 ↳ Leather Pot case, Pelle Frau® leather SC 06 Calicot / Nest Salgemma

CECCOTTICOLLEZIONI products

↳ Circo small table, walnut top / burnished base
 ↳ Lampo lamp, walnut dark / shade in cream fabric



↑ ↗ Ren dressing table, Pelle Frau® leather Saddle Extra Talpa / Canaletto walnut
↗ Lepli 39×39 ottoman, Pelle Frau® leather SC 31 Quarzo Fumè
↗ Lola Darling bed, Pelle Frau® leather SC 31 Quarzo Fumè
↗ Moondance night table, Pelle Frau® leather SC 31 Quarzo Fumè / Canaletto walnut top and back
↗ Moondance chest of drawers, Pelle Frau® leather SC 31 Quarzo Fumè / Canaletto walnut top and back



Metropolis Mansion

Laying out the true meaning of life in the splendid dream of the city. Observe the emotional temperature in the comfortable home environment.

The project owner has been engaged in the investment management industry for many years, and she expects to realize her expectations and investment planning for her ideal home. The designer has created an extremely elegant home space for the owner, abandoning the complicated decoration design, from the whole to the details, condensed and elegant, with a sense of art in the simplicity, which can make the family take a break from the busy work and relax.



➤ Viola armchair, Pelle Frau® leather SC 133 Travertino / dark brown leather cording / ash in a moka stain structure



↑ Grantorino sofa, Pelle Frau® leather Saddle Extra Cammello / Nest Madreperla
↑ Journey decorative cushion, Tannery
↑ Fiorile 120×120 cm dual-shelf table, veined Arabescato marble / Pelle Frau® leather SC 26 Topo / ash in a moka stain
↑ Cestlavie ø46 small table with storage, Pelle Frau® leather Saddle Extra Cammello / SC 66 India/ Galvanised feet
↑ Fidelio lamp
↑ Archibald armchair, Pelle Frau® leather SC 66 India





CECCOTTICOLLEZIONI products
↑ ↖ Rips vase
↑ Leather Pot vase, Pelle Frau® leather Nest Salgemma
↑ Mini Archibald Anniversary Limited Edition
↑ ↖ Whity 260×106 table, walnut
↑ ↖ Teresa chair with armrests, walnut / Pelle Frau® leather SC 66 India
↑ Teresa chair, walnut / Pelle Frau® leather SC 69 Iroko



- ↖ Assaya armchair, Pelle Frau® leather Saddle Extra Cammello / Nest Pomice
- ↖ Iren wall desk, Pelle Frau® leather Saddle Extra Cammello / ash in a moka stain
- ↖ Ginger chair, Pelle Frau® leather Saddle Extra Testadimoro / SC 66 India / ash in a moka stain
- ↖ I Cuscini 47×47, Pelle Frau® leather Nest Madreperla



↑ Ren ø 75 round mirror, Pelle Frau® leather Saddle Extra Talpa / Canaletto walnut
↑ ↗ Suzie Wong bed, Pelle Frau® leather Nest Madreperla / ash in a moka stain feet
↗ Moondance night table, Pelle Frau® leather Nest Madreperla / Canaletto walnut top and back
↗ Lepli 39x39 ottoman, Pelle Frau® leather Nest Calcedonio



Shenlanzhongxin

The space for real life should meet the needs of the soul and at the same time create a sense of well-being for the space. Poltrona Frau not only presents furniture, but also creates a warm and emotional environment through exquisite craftsmanship and a variety of different materials, creating a different atmosphere in the home. From the living room, dining room, bedroom or corner of your own, whether it is a coffee table, a throw pillow or a small wine cabinet, Poltrona Frau integrates the texture of perfect craftsmanship and aesthetics into the entire home and space, showing the temperature of life and unique and delicate taste.

Whether it is the morning sun or the sunset, here you can overlook the bustling city, admire the blue sea, find the joy of life in comfort, and enjoy a drink outside the window.



➤ Bob ø 80 h 32 cm coffee table, Pelle Frau® leather SC 26 Topo top / gunmetal base
➤ Bob ø 45 h 43 cm coffee table, semibrilliant Calacatta gold marble / Pelle Frau® leather SC 51 Panna / gunmetal base
➤ Cestlavie ø 46 small table with storage, Pelle Frau® leather Saddle Extra Cammello / gunmetal grey finish aluminium base



➤ Get Back sofa, Pelle Frau® leather Nest Pomice
➤ Clayton armchair, Pelle Frau® leather Soul Diana / fabric Giano col. 9 (lighter side) / ruthenium feet
➤ Cestlavie ø46 small table with storage, Pelle Frau® leather Saddle Extra Cammello / gunmetal grey finish aluminium



↑ ↖ Isadora chair, Pelle Frau® leather Saddle Extra Polvere / ash in a moka stain structure
↑ Leather Pot ø15 high vase, Pelle Frau® leather Nest Marte
↑ Leather Pot ø10 small vase, Pelle Frau® leather Nest Salgemma
↑ Leather Pot ø19 wide vase, Pelle Frau® leather Nest Larimar



↖ Oceano trunk, Pelle Frau® leather SC 98 Ribes*
↖ Hudson coffee table, Pelle Frau® leather Saddle Extra Talpa
↖ ↑ Hudson coffee table, Pelle Frau® leather SC 68 Sahara



➤ Volare bed, Pelle Frau® leather Nest Pomice / Saddle Extra Cammello
➤ Fidelio Notte night table, Pelle Frau® leather Saddle Extra Cammello / Canaletto walnut top
➤ Fidelio Bench, Pelle Frau® leather Talpa



↑ Jack bed with side table, Pelle Frau® leather SC 184 Atollo*
↖ Moondance cest of drawer, Pelle Frau® leather SC 189 Menta* / Canaletto walnut top
↖ Leather Pot ø 19 cm wide vase, Pelle Frau® leather Nest Larimar
↖ Leather Pot ø 10 cm small vase, Pelle Frau® leather SC 26 Topo



↶ Bluemoon bed, Pelle Frau® leather SC 72 Coriandolo*
↑ Fiorile with drawer, Pelle Frau® leather 75 Cognac* / ash in a moka stain base



➤ Coupè bed, Pelle Frau® leather SC 68 Sahara / fabric London col. Gray
➤ Fidelio Notte night table, Pelle Frau® leather Saddle Extra Talpa / Canaletto walnut top

Chengdu — China

designer: Jun Yang

Yitaitianjiao

In the bustling CBD of the city, the homeowner seeks a home that is not just a physical shelter but also a place where one's inner self can reside peacefully, abundantly, and harmoniously. The designer adheres to the preferences of the homeowner and, based on meeting the functional needs of daily life, creates a warm and comfortable living environment using simple, clean materials and refreshing, soft tones.

By incorporating the classic design and exquisite quality of Poltrona Frau products, they have crafted a living space that opens the door to the hustle and bustle of the world, and when closed, fulfills all expectations of home for meals and seasons, providing satisfaction in every aspect.

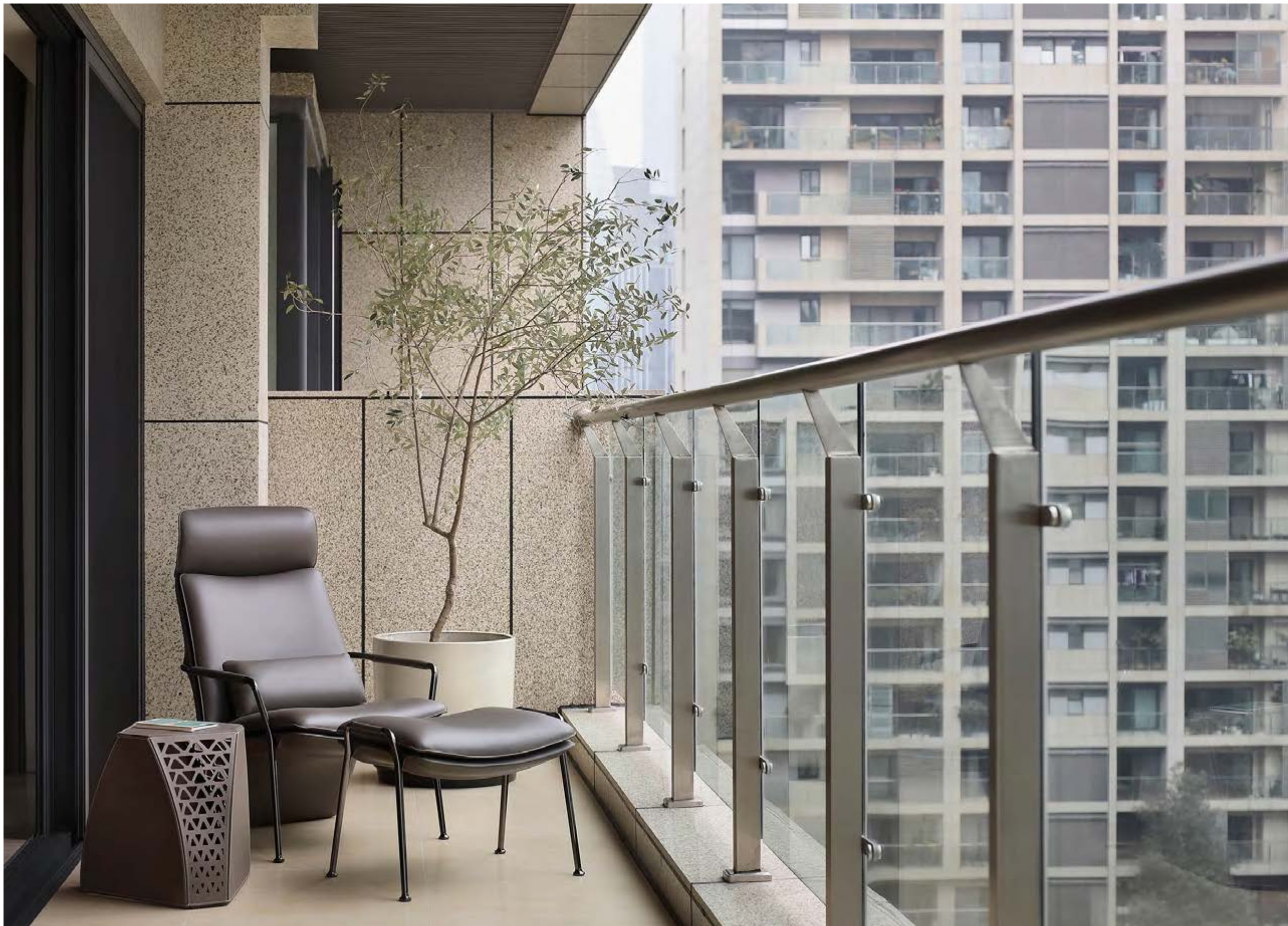


➤ 1919 armchair, Pelle Frau® leather Century Sangiovese*
➤ Marianne vase, large



↑ ↗ Archibald King armchair, Pelle Frau® leather Nest Ambra
↑ Rips vase, large
↗ Let it Be sofa, Pelle Frau® leather SC 23 Tortora / Saddle Avocado
↗ Ilary ø 110 h 35 small table, brilliant Fior di Pesco marble top / ash in a moka stain base
↗ Bob ø 45 h 52 small table, brilliant Calacatta marble top / gunmetal base





↵ Arabesque armchair and ottoman, Pelle Frau® leather Soul Dusty
↵ Hudson ottoman, Pelle Frau® leather Saddle Extra Polvere



➤ Othello 260 × 110 cm table, brilliant Calacatta Gold marble / ash in a moka stain base
➤ Alo revolving stool, Pelle Frau® leather SC 20 Inchiostro
➤ Fitzgerald chair, Pelle Frau® leather SC 180 Celadon



↖ Dezza 48 armchair, Pelle Frau® leather SC 20 Inchiostro / Cavallino / black lacquered ash
↖ Holly lamp
↑ Trust desk, Pelle Frau® leather Saddle Executive Havana
↑ Downtown President armchair, Pelle Frau® leather SC 92 Garnet



➤ Suzie Wong bed, Pelle Frau® leather Nest Madreperla
➤ Sanluca armchair, Pelle Frau® leather SC 274 Fresco Blue
➤ Fidelio Notte night table, Canaletto walnut top / Pelle Frau® leather Saddle Extra Polvere
➤ Xi table lamp, amber glass



↖ Lola Darling bed, Pelle Frau® leather Nest Cemento
↖ Clayton bench, Pelle Frau® leather SC 51 Panna
↑ Fidelio Notte chest of drawers, Canaletto walnut top / Pelle Frau® leather Saddle Extra Polvere
↑ Ren magazine rack, Pelle Frau® leather Saddle Extra Talpa



↶ Martha rocking armchair, Pelle Frau® leather Saddle Extra Talpa / fabric Millerighe col. Rosa Antico*
↑ John-John bed, Pelle Frau® leather SC 233 Bardiglio
↑ Più Notte drawer night table, Pelle Frau® leather Saddle Avorio
↑ Alma table lamp

Yanxi Rose Garden

Located in the famous imperial garden site of the Tang Dynasty, it pays attention to the diversity of life, emphasizes ecological habitat, and pursues the concept of life, making the internal life of the house more harmonious with the community space.

The design ensures the vast landscape vision and sufficient family activity space, and tells the internal and external repair of quality life from the details.



➤ Cestlavie Ø 88 small table with storage, Pelle Frau® leather Saddle Extra Cammello / SC 66 India top / gunmetal grey finish aluminium legs
➤ Gest Back sofa, fabric Damiè col. 429.031 / Pelle Frau® leather SC 26 Topo / ruthenium base



➤ Pillow armchair, Pelle Frau® leather SC 128 Carminio
➤ Gest Back sofa, fabric Damiè col. 429.031 / Pelle Frau® leather SC Topo / ruthenium base



↖ Pillow armchair, Pelle Frau® leather SC 128 Carminio
↖ Mini Vanity Fair, Pelle Frau® leather SC 128 Carminio
↑ Ren magazine rack, Pelle Frau® leather Saddle Extra Talpa



↑ ↗ Zhuang oval tray, Pelle Frau® leather SC Saddle Extra Cammello / Canaletto walnut
↗ Montera column-base stool, Pelle Frau® leather SC 68 India / SC 233 Bardiglio





↑ ↗ Mamy Blue bed, Pelle Frau® leather Saddle Extra Cammello / SC 26 Topo
↑ Nivola armchair, Pelle Frau® leather Saddle Extra Cammello / SC 28 Seppia
↑ Fidelio Notte night table, Pelle Frau® leather Saddle Extra Cammello / Canaletto walnut top
↑ Xi table lamp, sapphire glass
↑ Brera bench, Pelle Frau® leather Saddle Extra Cammello / ash in a moka stain

Qian Hai Imperial Mansion

The apartment with unparalleled sea view is designed with wood combined with marble and other hard furnishings to set a plain style tone for the space. The designer made visual extensions in the limited space, focusing on creating a sense of space in the area, while meeting the client's needs in terms of color matching, and building two completely different schemes through different soft furnishings. The owner is a woman of taste, with an elegant aesthetic and the pursuit of high quality of life, whose carefully purchased accessories can be seen everywhere in every area of the house. Create a comfortable modern urban space.



➤ Archibald armchair, Pelle Frau® leather Nest Cemento
➤ Bob small table, Pelle Frau® leather SC 51 Panna / ruthenium base
➤ Zhuang Desk multi-purpose box and pen holder case, Pelle Frau® leather Saddle Tortora



- ✦ Grantorino sofa, Pelle Frau® leather Saddle Extra Talpa / Nest Madreperla
- ✦ Fiorile 120 × 65 cm small table, brilliant marble top / ash in a moka stain base
- ✦ Hudson coffee table, Pelle Frau® leather Saddle Extra Talpa
- ✦ Chado 200 × 300 cm rug, Pearl Grey
- ✦ Decorative Cushion 47 × 47 cm, fabric Surawong col. Red/Gold*



↶ Le Spighe stool, Pelle Frau® leather SC 51 Panna / American walnut veneer
↑ Martha armchair, Pelle Frau® leather Saddle Extra Polvere / Nest Eliodoro / ash in a moka stain feet
↑ Fiorile 58×56 h 37 small table, ash in a wengè stain top and base



➤ Bolero 220 × 100 cm table, brilliant Calacatta marble top / ash in a wengè base
➤ Montera chairs, Pelle Frau® leather SC 51 Panna / SC 146 Coccio Pesto / ash in a wengè stain base
➤ Zhuang round tray, Pelle Frau® leather Saddle Extra Cammello
➤ Pura bowl, white Carrara marble



↑ ↗ Ren side table, Pelle Frau® leather Saddle Extra Cammello / Canaletto walnut structure
↑ Leather Pot wide vase, Pelle Frau® leather SC 06 Calicot
↗ Fred desk, Pelle Frau® leather Saddle Extra Cammello / ash in a wengè stain base
↗ Gingr chair, Pelle Frau® leather Saddle Extra Testa di Moro / SC 66 India / ash in a wengè stain base
↗ Turner bookcase, Pelle Frau® leather Saddle Executive Ink / Canaletto walnut



